

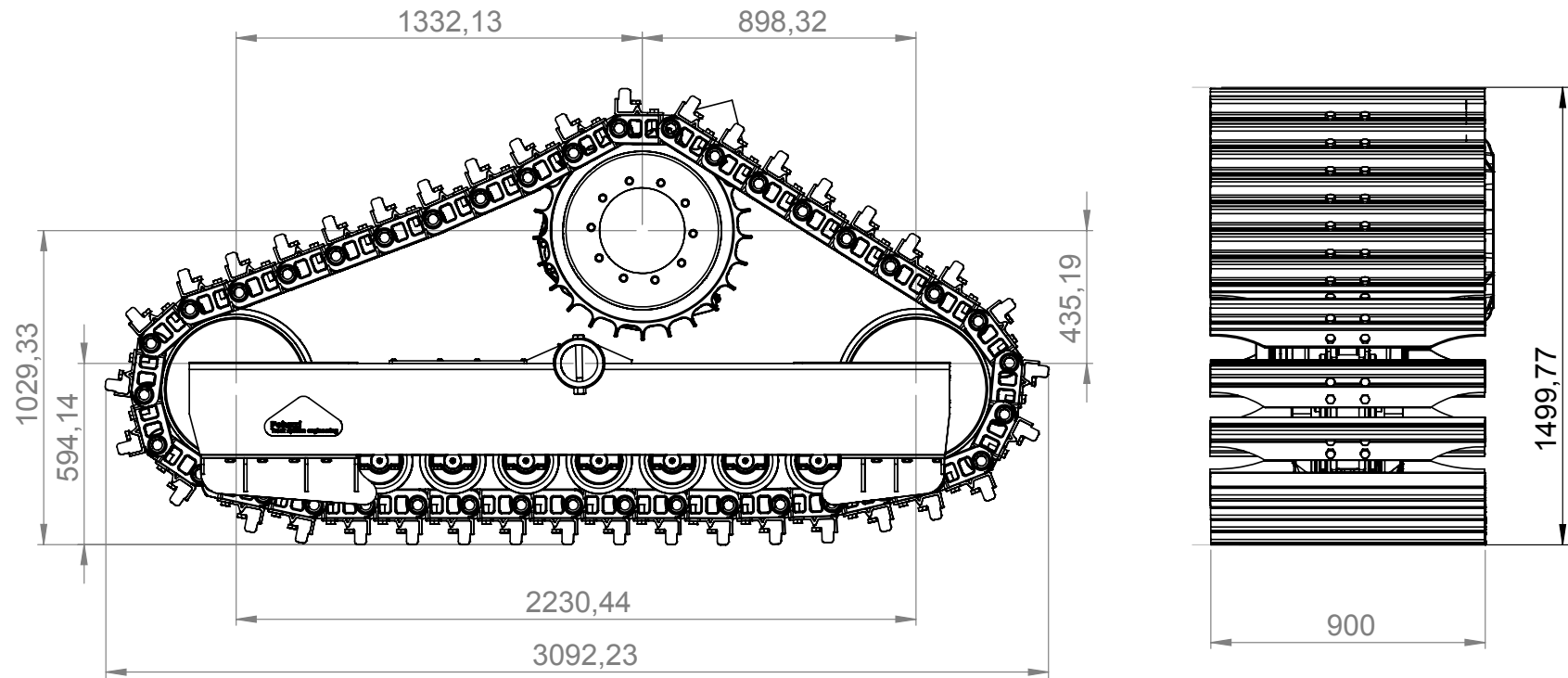
-Heavy tracks

-Heavy Track “u”type

-Standard Tracks 7R

-Standard Tracks 6R

# Heavy Track

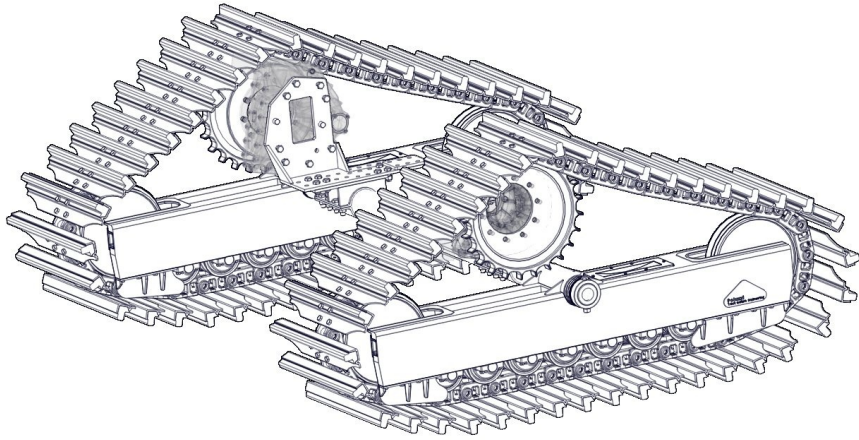


## Heavy Track system :

steel track system with 7 rollers undercarriages ( boxed frames ) D4 type / 39 links self-lubricated chains / 25 teeth sprockets / hydro-mec piston for tensioning / complete attachment system with central axle tube. available in following versions : **HT900R7** ( with 900 mm width steel/rubber pads ) / **HT900R7-ST** ( with 900 mm width steel pads ) / **HT800R7** ( with 800 mm width steel/rubber pads ) / **HT800R7-ST** ( with 800 mm width steel pads ).



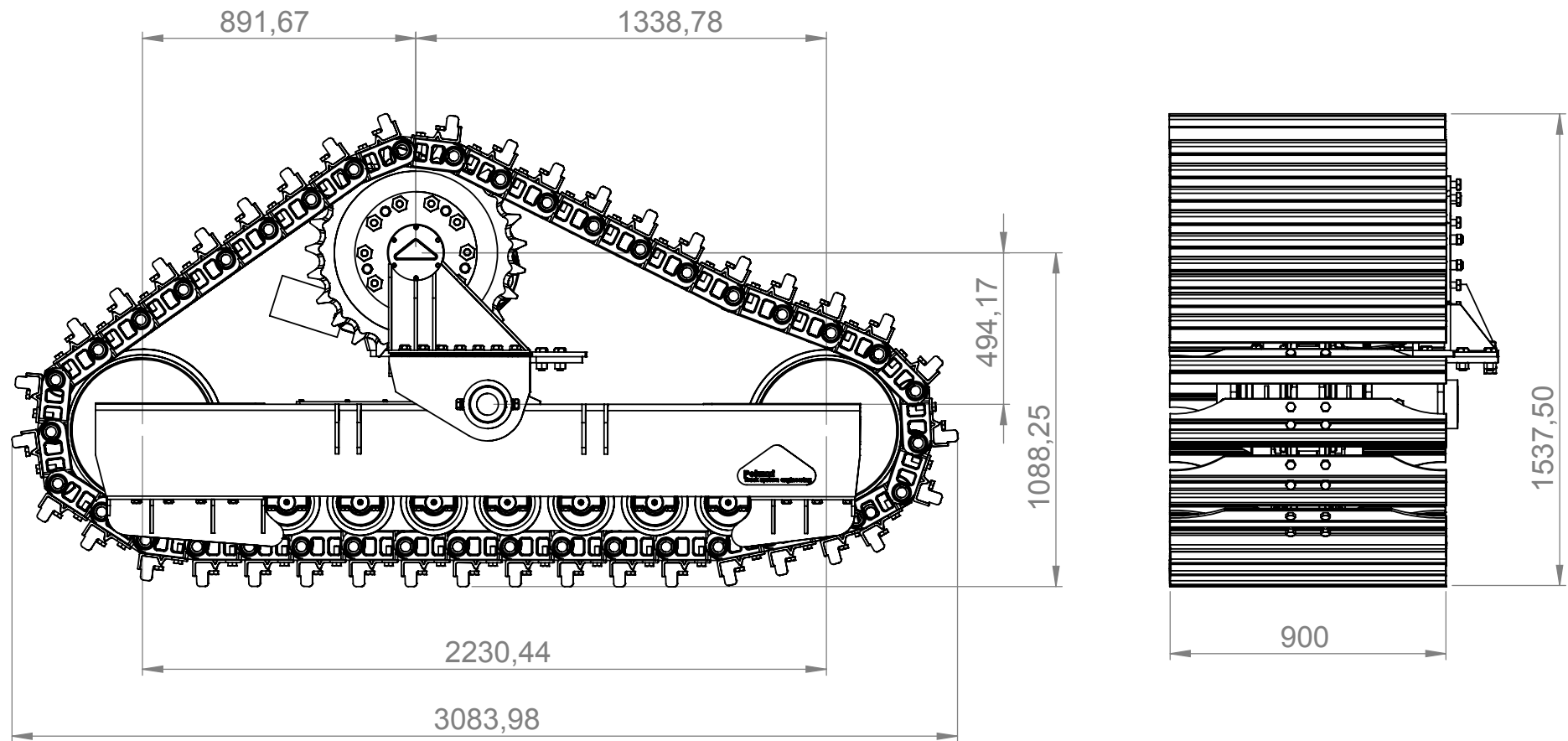
# Heavy Track



configuration table for combine harvester machines

manufacturer / model series	John Deere	New Holland	Claas	case ih	Laverda	Deutz-Fahr	Fendt
<b>HT900R7</b>	S 680 / S 690	CX 8080 / 8090	LEXION 740 / 780	AF 8230 / 9230	M 400	C 9000	8380 P / 8410 P / 9490 X
<b>HT800R7</b>	T 660 / 670	CX 7080 / 7090	LEXION 670 / 740	AF 7230 / 8230	M 400	C 9000	6275 C / 6335 C
<b>HT900R7-ST</b>	S 680 / S 690	CX 8080 / 8090	LEXION 740 / 780	AF 8230 / 9230	M 400	C 9000	9490 X / 8380 P / 8410 P
<b>HT800R7-ST</b>	S 660 / 670	CX 7080 / 7090	LEXION 670 / 740	AF 7230 / 8230	M 400	C 9000	6275 C / 6335 C

# Heavy Tracks : “u” type attachment

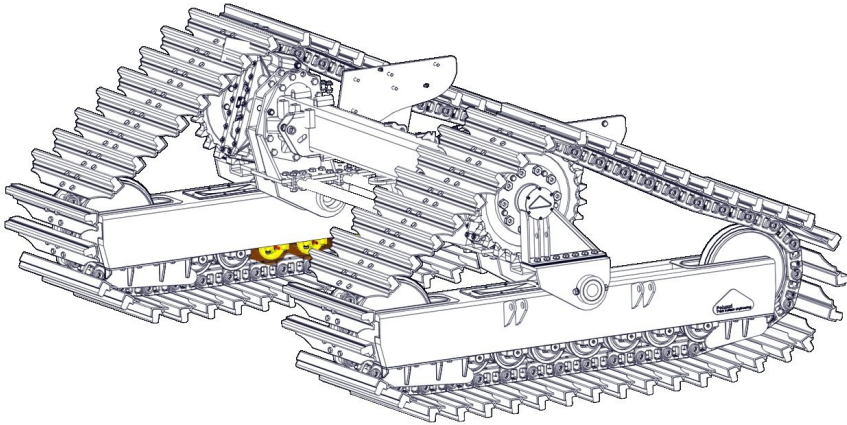


## Heavy Track system with “U” type attachment :

steel track system with 7 rollers undercarriages ( boxed frames ) D4 type / 39 links self-lubricated chains / 25 teeth sprockets / hydro-mec piston for tensioning / complete attachment system “U” type attachment.  
available in following versions : **HT900R7UT** ( with 900 mm width steel/rubber pads ) / **HT900R7-STUT** ( with 900 mm width steel pads ) / **HT800R7UT** ( with 800 mm width steel/rubber pads ) / **HT800R7-STUT** ( with 800 mm width steel pads ).

# Heavy Track

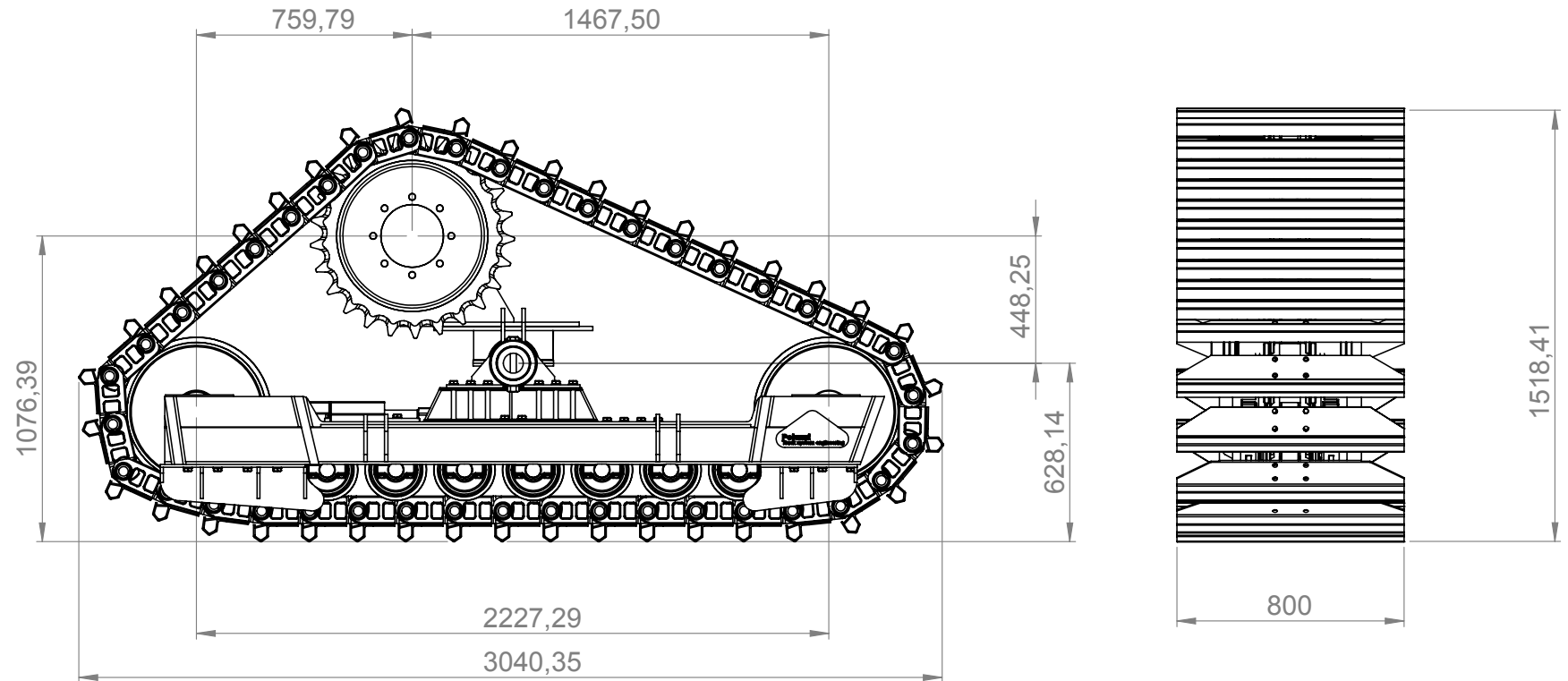
## "U" TYPE ATTACHMENT



configuration table for combine harvester machines

manufacturer / model series	John Deere	New Holland	Claas	case ih	Laverda	Deutz-Fahr	Fendt
<b>HT900R7UT</b>	S 680 / S 690	CX 8080 / 8090 CR 9.90 / 10.90	LEXION 740 / 780	AF 8230 / 9230	M 400	C 9000	8380 P / 8410 P / 9490 X
<b>HT800R7UT</b>	T 660 / 670	CX 7080 / 7090 CR 7.90 / 8.80 / 8.90	LEXION 670 / 740	AF 7230 / 8230	M 400	C 9000	6275 C / 6335 C
<b>HT900R7-STUT</b>	S 680 / S 690	CX 8080 / 8090 CR 9.90 / 10.90	LEXION 740 / 780	AF 8230 / 9230	M 400	C 9000	9490 X / 8380 P / 8410 P
<b>HT800R7-STUT</b>	S 660 / 670	CX 7080 / 7090 CR 7.90 / 8.80 / 8.90	LEXION 670 / 740	AF 7230 / 8230	M 400	C 9000	6275 C / 6335 C

# Standard Tracks 7R

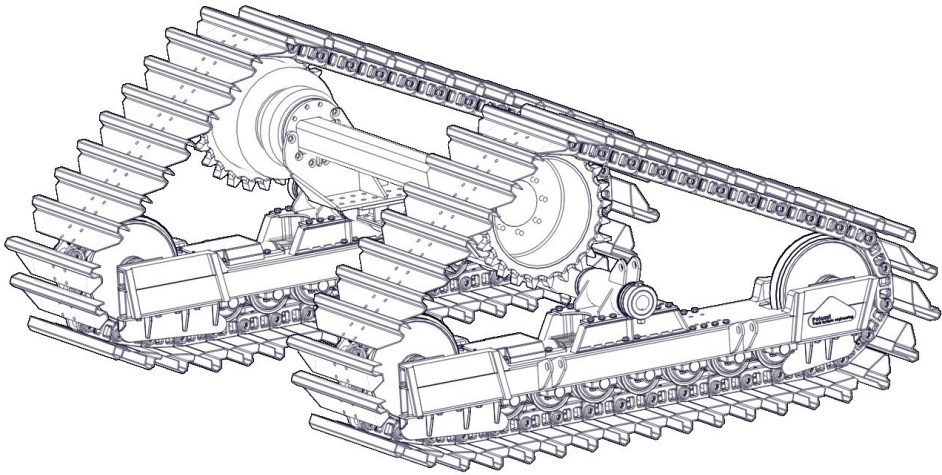


## Standard Tracks 7R :

Standard track system with 7 rollers undercarriages D4 type rollers , self-lubricated chains 39 links , 25 teeth sprockets , hydro-mec piston for tensioning , complete attachment system ( central axle tube ) available in following versions : **STD900R7** ( with 900 mm width steel/rubber pads ) / **STD800R7** ( with 800 mm width steel/ rubber pads ) / **STD900R7-ST** ( with 900 mm width steel pads ) / **STD800R7-ST** ( with 800 mm width steel pads )



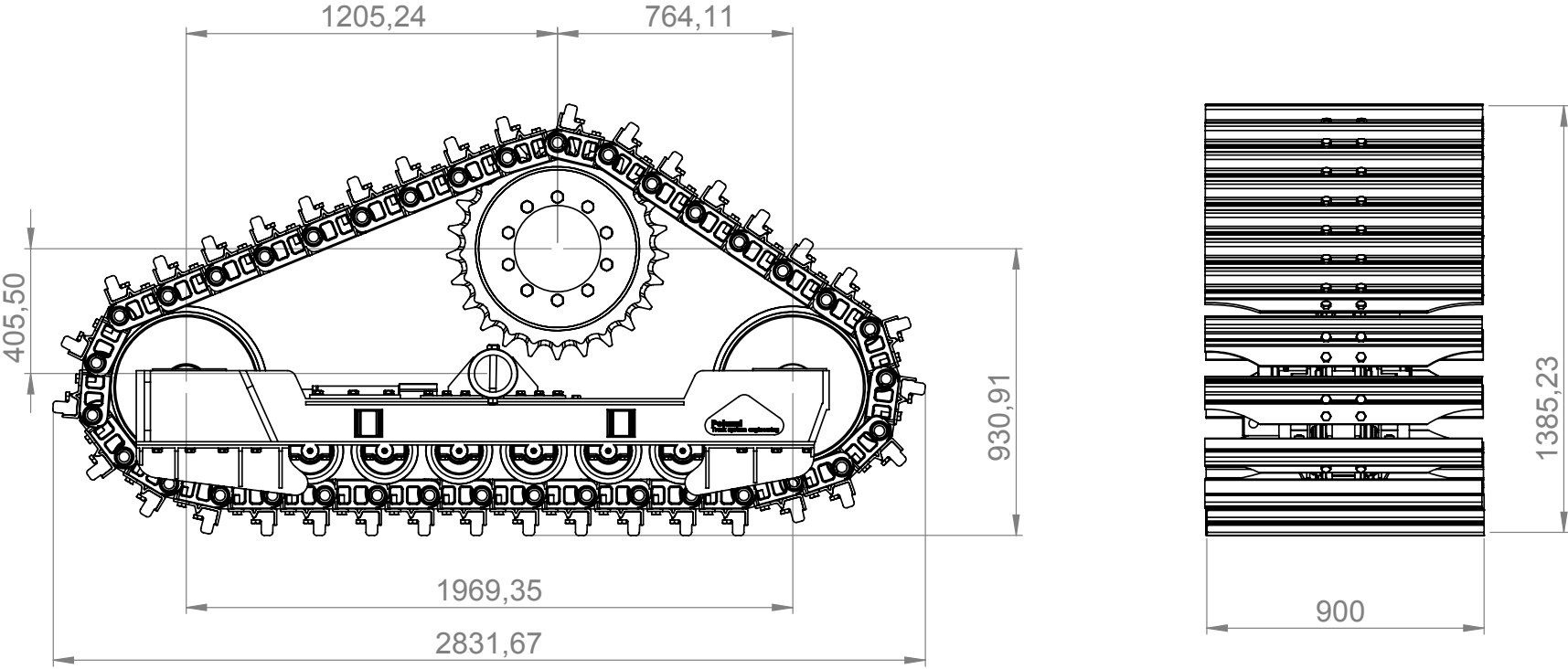
# Standard Track 7R



configuration table for combine harvester machines

manufacturer / model series	John Deere	New Holland	Claas	case ih	Laverda	Deutz-Fahr	Fendt
<b>STD900R7</b>	S 680 / S 690	CX 8080 / 8090	LEXION 740 / 780 AVERO 240	AF 8230 / 9230	M 400	C 9000	8380 P / 8410 P / 9490 X
<b>STD800R7</b>	T 660 / 670	CX 7080 / 7090	LEXION 670 / 740 AVERO 240	AF 7230 / 8230	M 400	C 9000	6275 C / 6335 C
<b>STD900R7-ST</b>	S 680 / S 690	CX 8080 / 8090	LEXION 740 / 780 AVERO 240	AF 8230 / 9230	M 400	C 9000	9490 X / 8380 P / 8410 P
<b>STD800R7-ST</b>	S 660 / 670	CX 7080 / 7090	LEXION 670 / 740 AVERO 240	AF 7230 / 8230	M 400	C 9000	6275 C / 6335 C

# Standard Track 6R

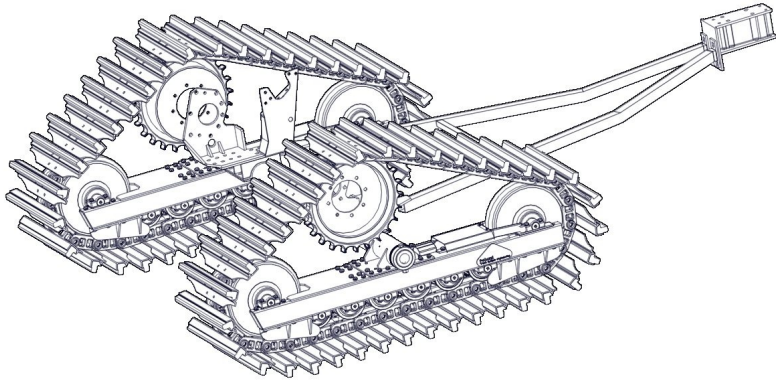


## Standard Track 6R :

standard track system with 6 rollers undercarriages D4 type rollers , 35 links D4 self-lubricated chains, hydro-mec piston for tensioning and complete attachment system ( central axle tube ) . available in following versions : STD800R6 ( with 800 mm width steel/rubber pads ) STD900R6 ( with 900 mm width steel/rubber pads ) STD800R6-ST ( with 800 mm width steel pads ) STD900R6-ST ( with 900 mm steel pads )



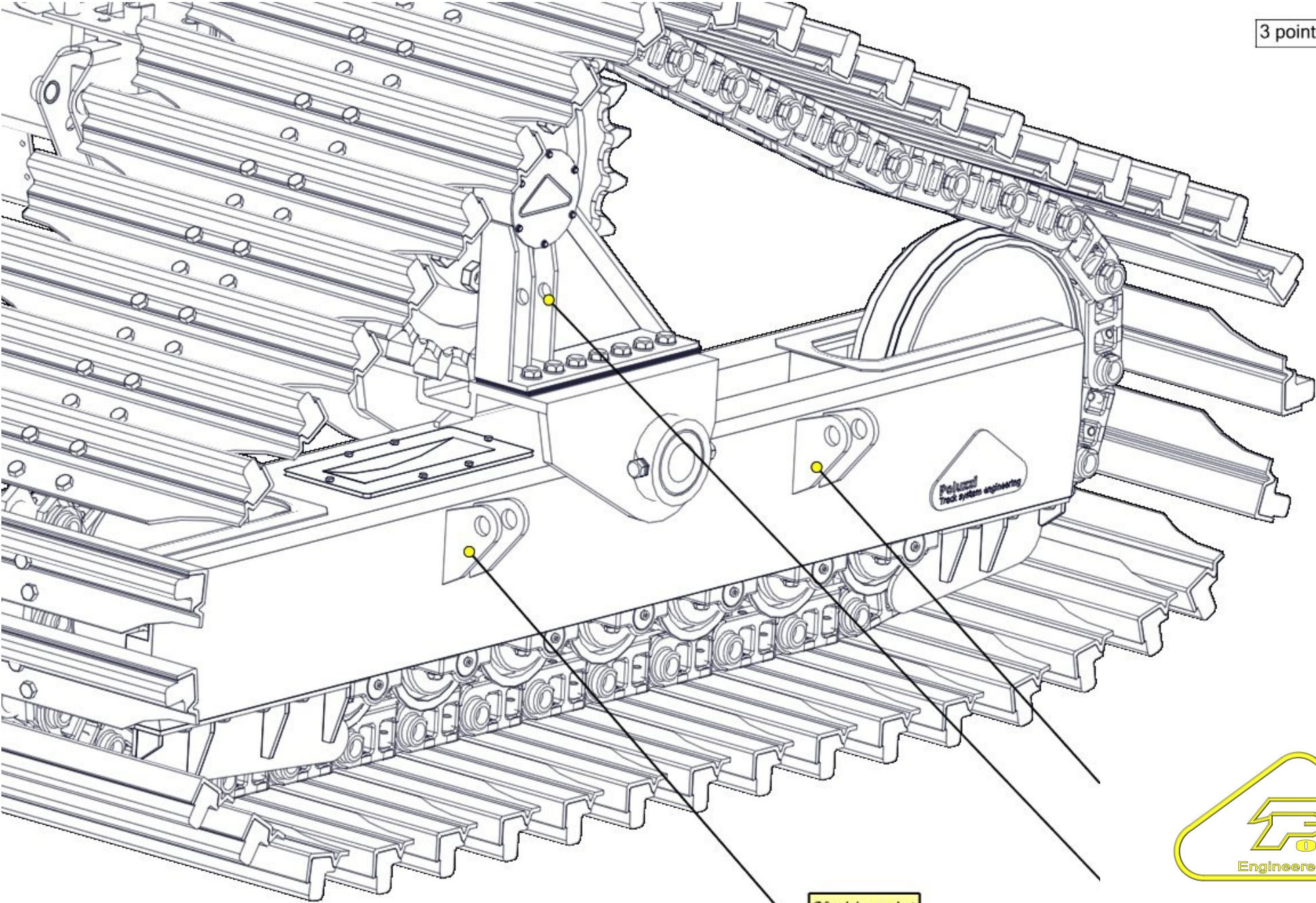
# Standard Track 6R



configuration table for combine harvester machines

manufacturer / model series	John Deere	New Holland	Claas	case ih	Laverda	Deutz-Fahr	Fendt
<b>STD800R6</b>	W 540 / W 550 T 550 / 560	TC 4.90 / TC 5.70 TC 5.80 / CX 5080 / CX 5090	TUCANO 450 / 320 DOMINATOR 130	AF 6130	M 300	60 series	5275 C / 5255 L
<b>STD900R6</b>	W 660 / T 660 / S 660	TC 5.80 / TC 5.90 CX 5080 / CX 5090	TUCANO 450 / 570	AF 7130	M 300 / M 400	C 6040	6275 L
<b>STD800R6-ST</b>	W 540 / W 550 T 550 / 560	TC 4.90 / TC 5.70 TC 5.80 / CX 5080 / CX 5090	TUCANO 450 / 320 DOMINATOR 130	AF 6130	M 300	60 series	5275 C / 5255 L
<b>STD900R6-ST</b>	W 660 / T 660 / S 660	TC 5.80 / TC 5.90 CX 5080 / CX 5090	TUCANO 450 / 570	AF 7130	M 300 / M 400	C 6040	6275 L

# Appendix : Attachments & parts



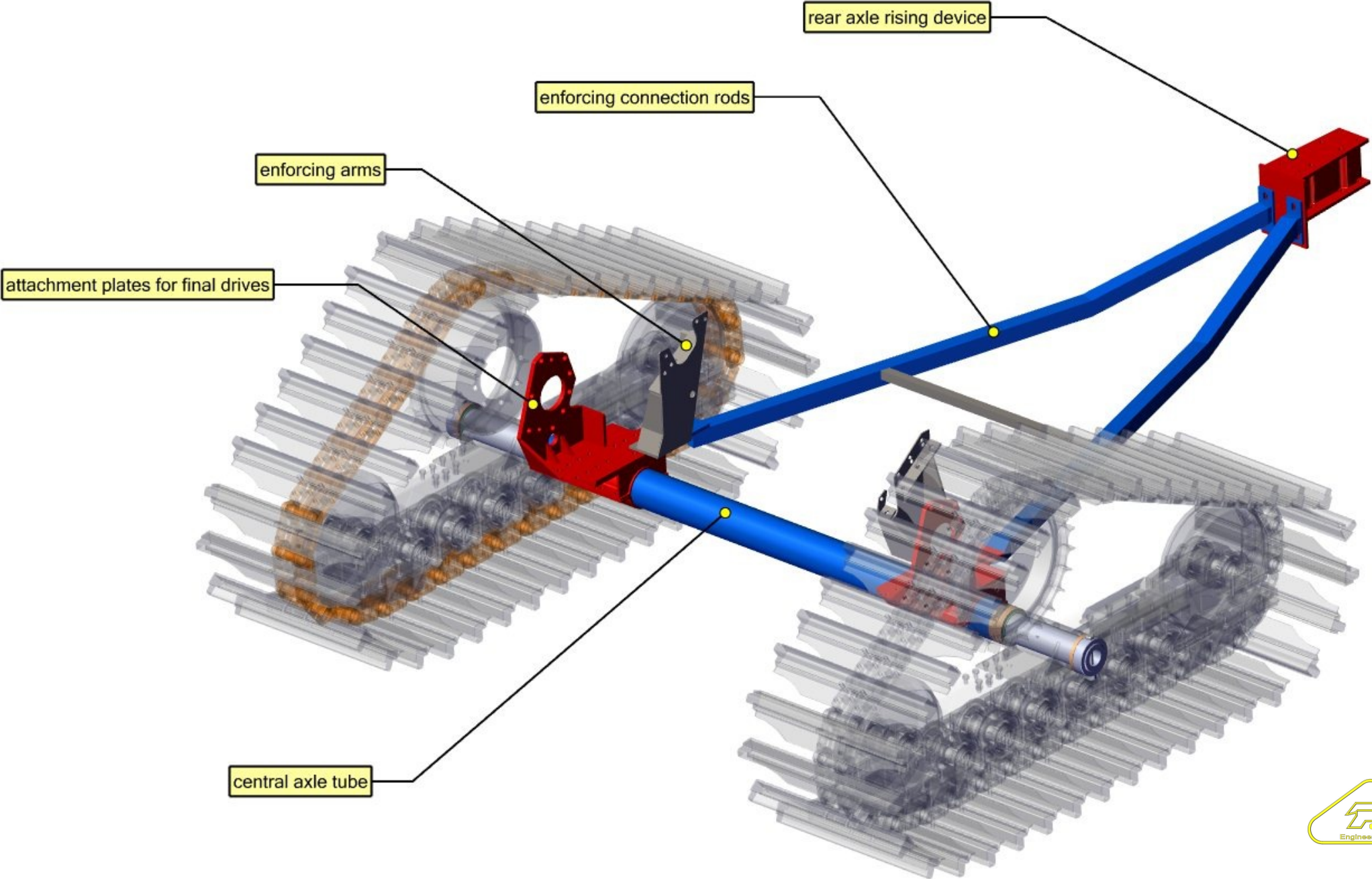
3 points attachment

2° side point

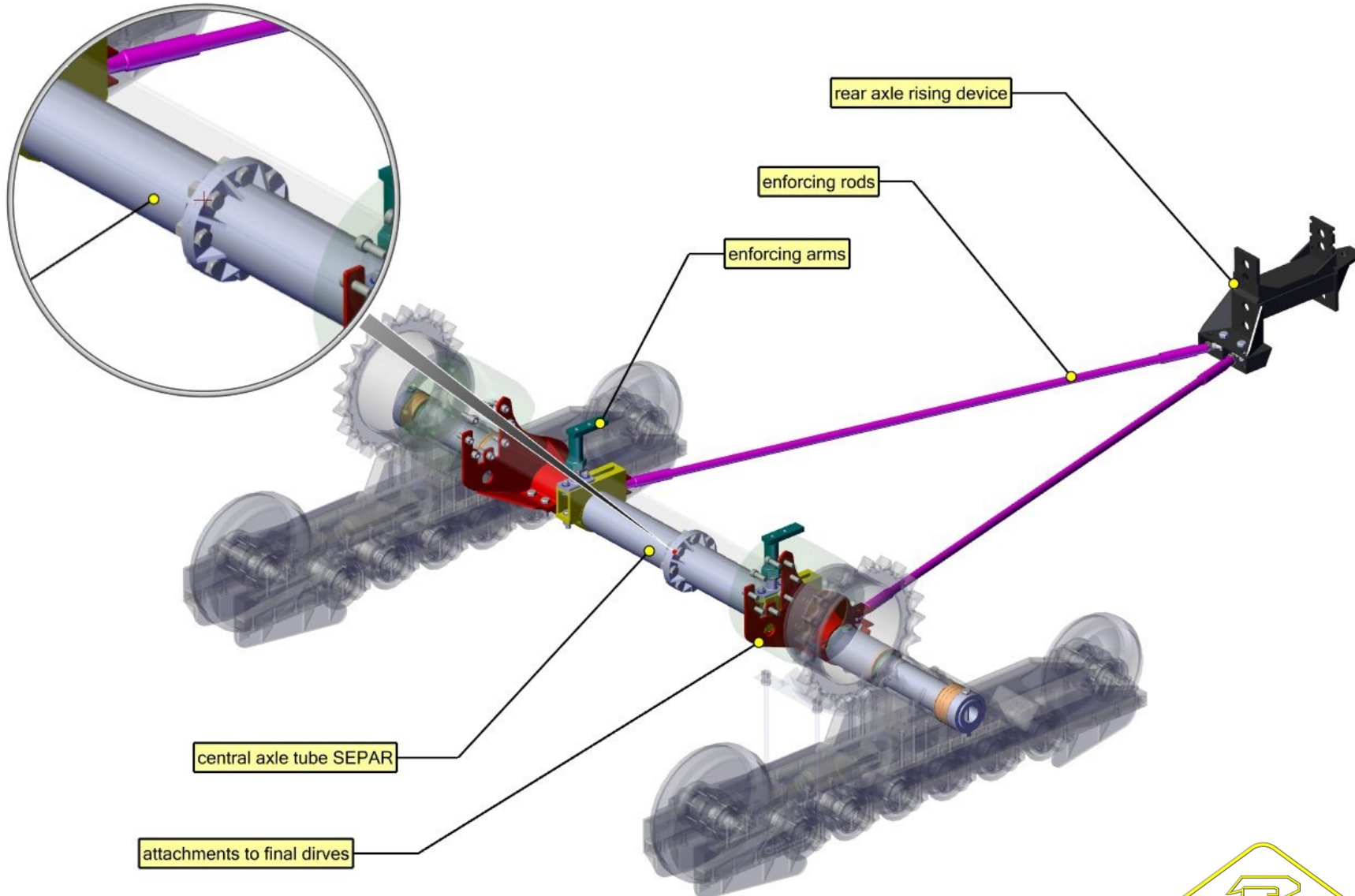




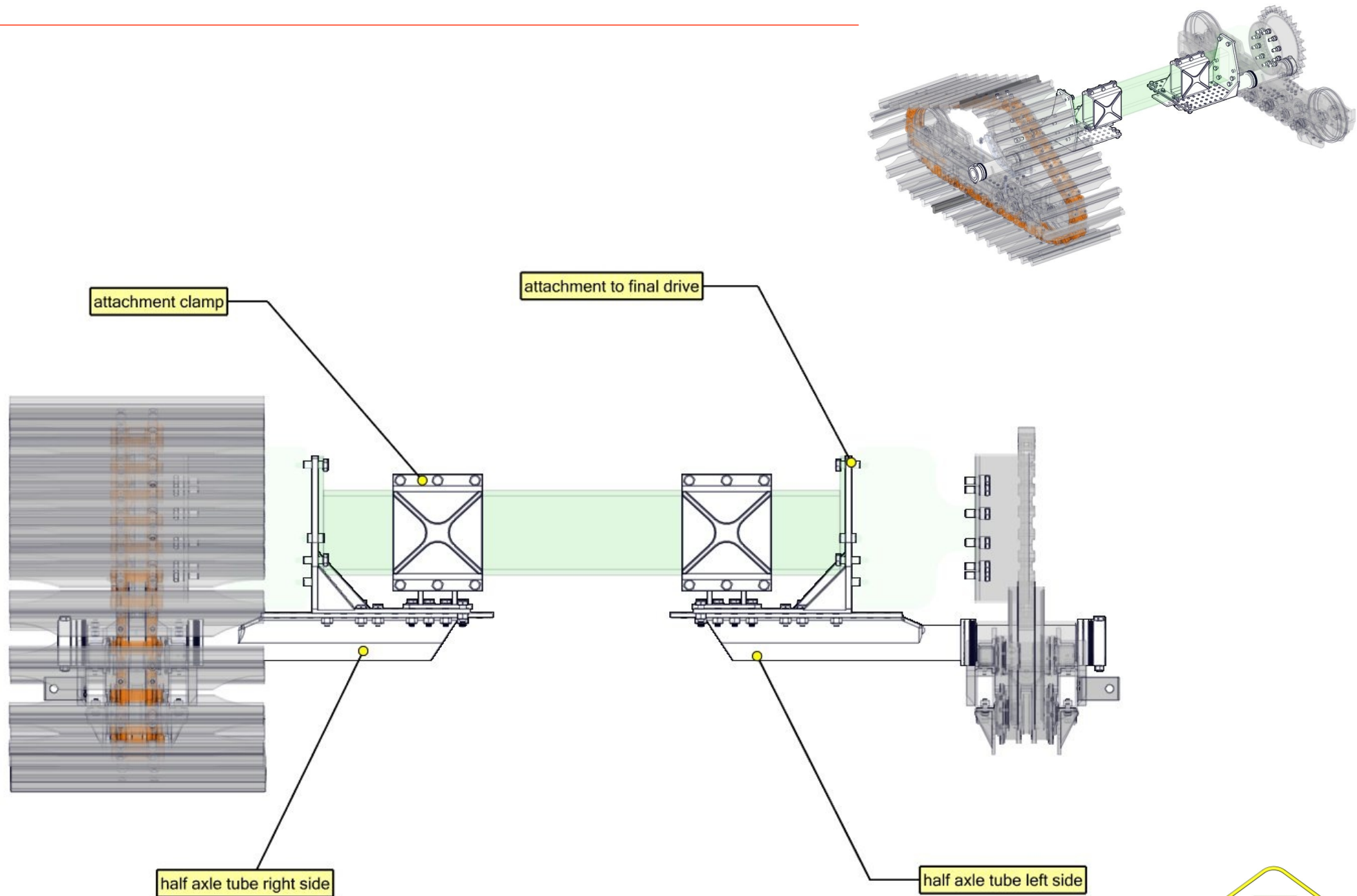
# Central Axle Tube System



# Central Axle Tube : SEPAR system

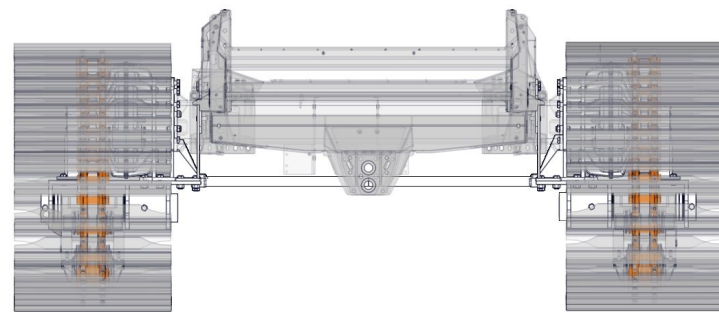
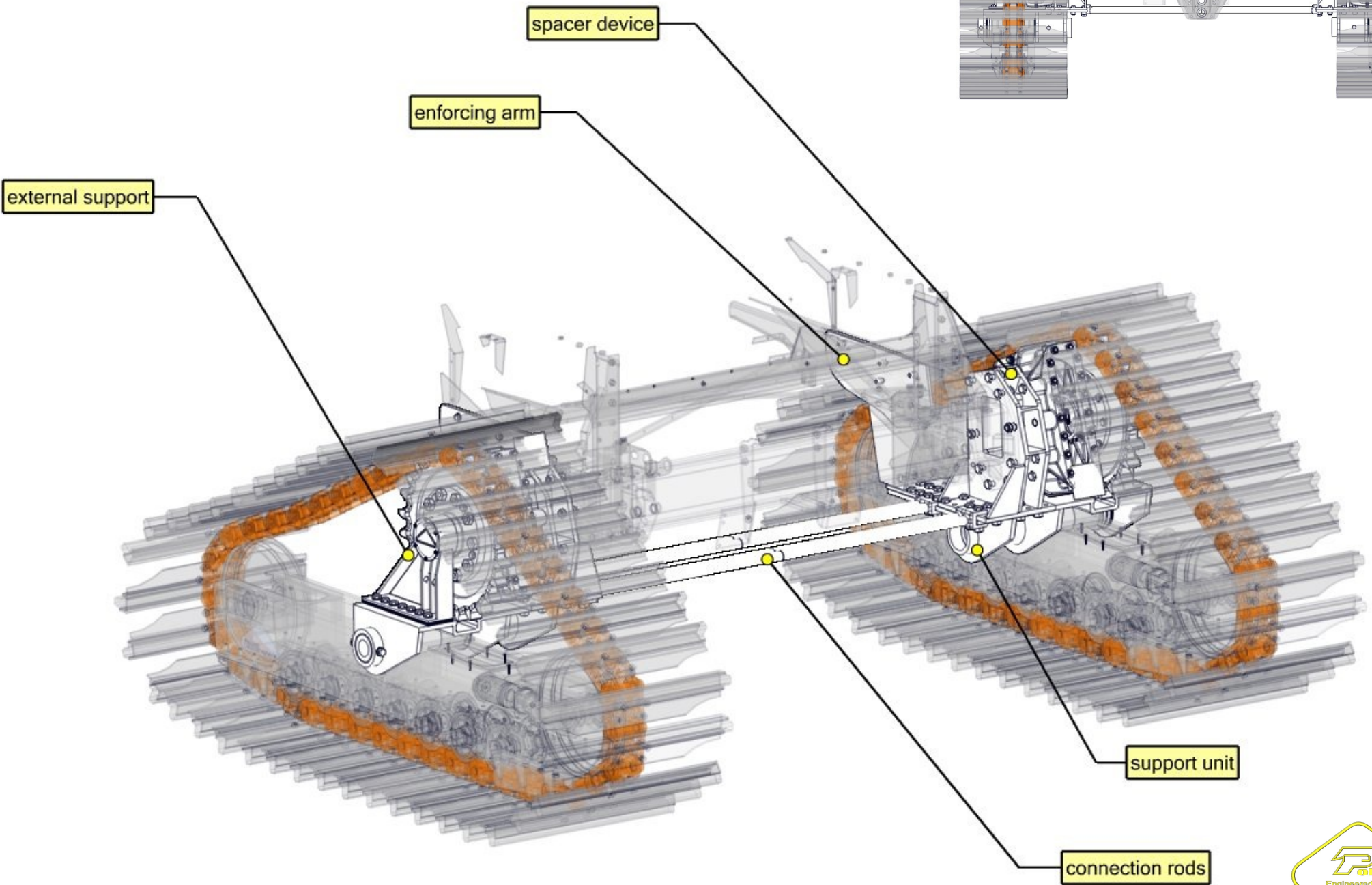


# Half & Half Chassis System





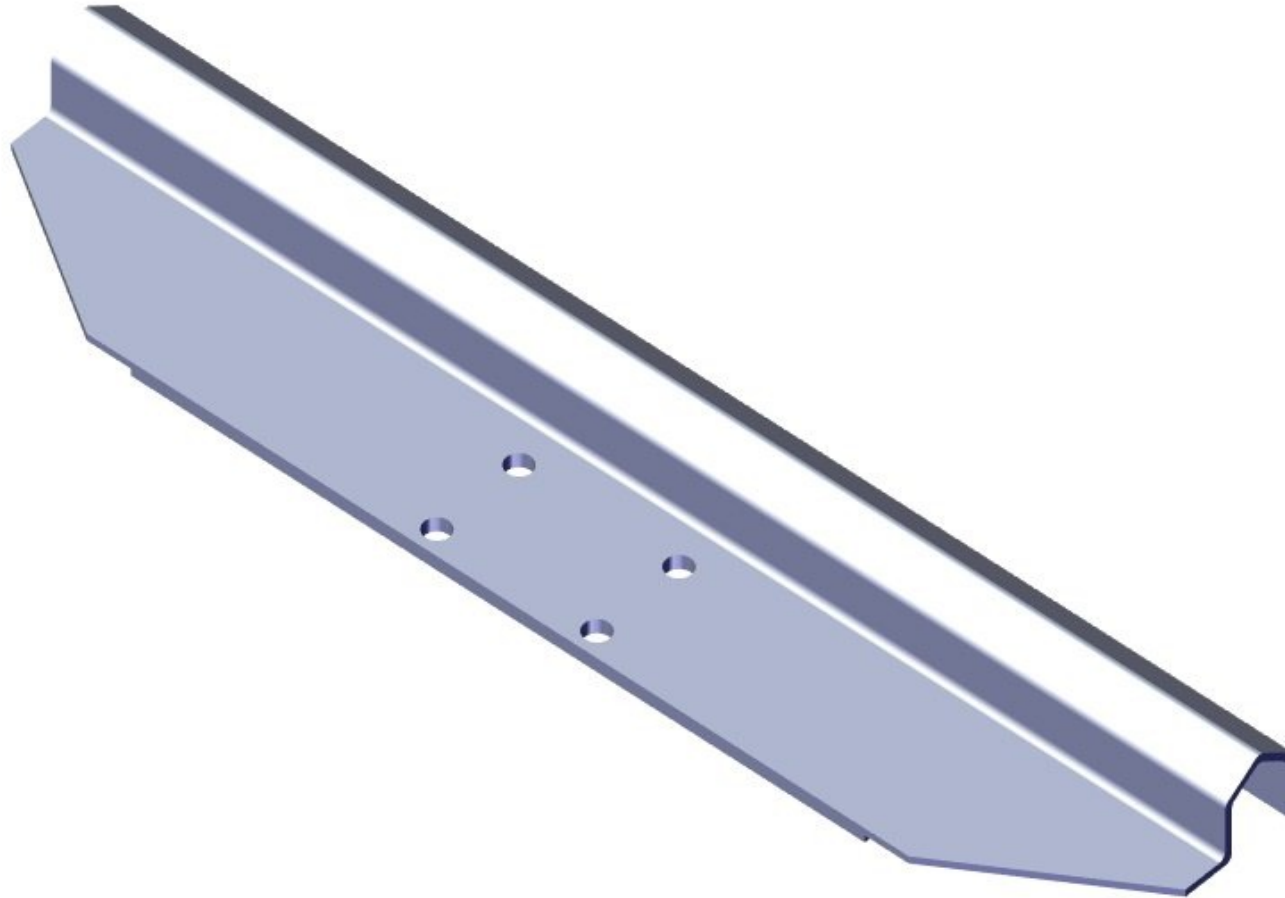
# "U" type attachment





# Steel Pad

---



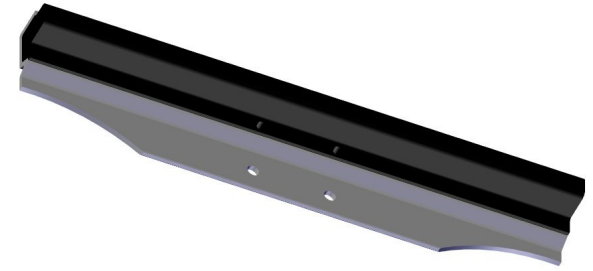
## **Steel Pad :**

pad shoe entirely made in special steel , applicable on all track systems versions . available in following sizes :  
800 mm width / 900 mm width / 1000 mm width ( only on demand ).



# Steel-Rubber pad

---



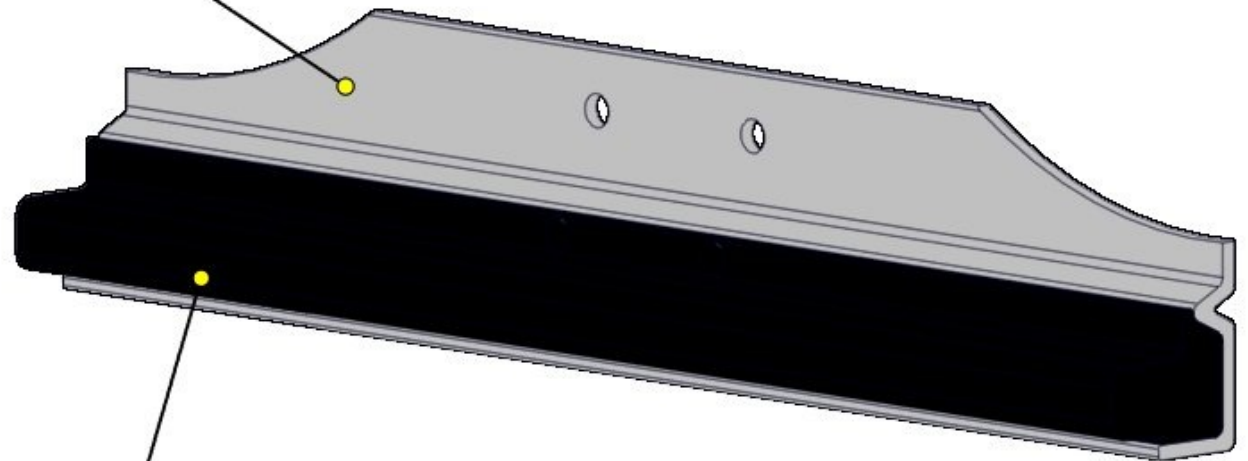
## Steel-rubber pad :

pad shoes composed by 2 parts : steel metal sheet ( as base ) and rubber insert fitted with glue on metal sheet base . applicable on all track systems versions .

available in following sizes :

800 mm width / 900 mm width .

metal plate

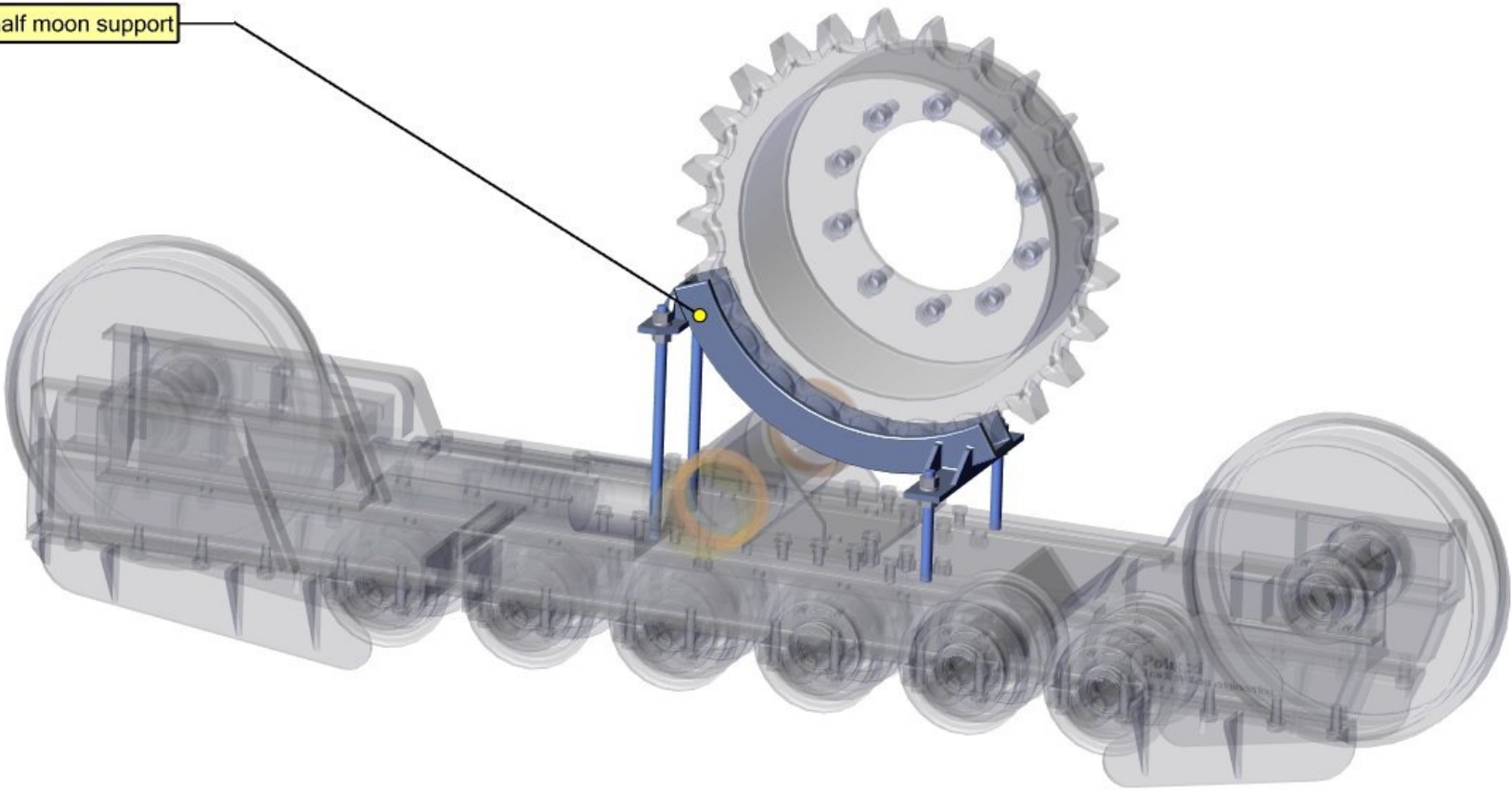


rubber insert

# Half Moon support



half moon support



Optional device for EASY & QUICK tracks removal system



